



# LABRADOR RETRIEVER RESCUE SOUTHERN ENGLAND

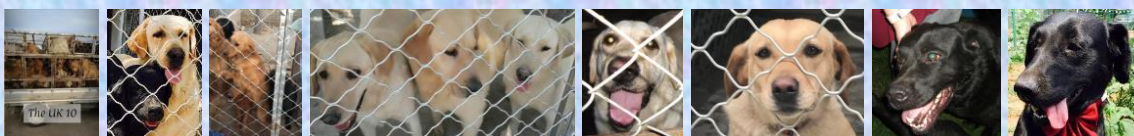
Charity Number : 1105955  
[www.labrador-rescue.org.uk](http://www.labrador-rescue.org.uk)



Welcome to our September newsletter. It appears summer is not finished with us just yet! We hope that you and your pups have been able to keep cool. There are lots of dogs coming into rescue at the moment and sadly fewer homes applying. So please do spread the word to anyone you might know who can give a brilliant home to one of our gorgeous dogs.

We thank you for your continued support and hope you enjoy reading this Newsletter. Don't forget to follow us on Facebook: [www.facebook.com/LRRSE](https://www.facebook.com/LRRSE) and please do continue to share our posts.

P.S. Tango is on holiday this month. He'll be back next month, with more shenanigans!



## China Dog Update

All our dogs in China continue to do well. The latest three lovely dogs to arrive, are in foster and now ready for their forever homes. More details of each one can be found on our website.

We have two flights booked for October with another 6 dogs arriving and looking for their forever homes here with us. We wish them a safe journey and can't wait to meet them.



Una



PURDY  
(the honorary  
lab!)



Lula



## Fostering a dog isn't a lifetime commitment.

*It's a commitment to saving a LIFE.*

*We urgently need people that could join our small team of fosterers.*

*If YOU would like to help, then please contact us*

**PLEASE GET IN TOUCH WITH US IF YOU FEEL THAT YOU COULD OFFER A STARTING PLACE FOR ONE OF THESE VERY SPECIAL SOULS.**

[LOUISE.LRRSE@gmail.com](mailto:LOUISE.LRRSE@gmail.com) Or [SUE.LRRSE@gmail.com](mailto:SUE.LRRSE@gmail.com)

*If you are able to help by donating or joining our fundraising page or by simply sharing our posts, we would be very grateful.*

Visit our donate page <https://www.labrador-rescue.org.uk/donate.html> for many simple ways to donate.

Thank you

# CALI



Hi Sue

Just an update on Cali.

We have just come back from two weeks by the coast.  
She absolutely loved the beach - chasing her ball, playing in the  
sea and digging in the sand.

She was really good on holiday, but she was so happy to be  
home again.

We love her.

Jayne

P.S. Obviously could not let her off near any cattle but, other  
than that, perfect!





# BERTIE

Hi Sue,

As you may be aware, poor Bertie didn't have the best starts in his new home. After two months, he was limping and a trip to the vet diagnosed a luxating patella and cruciate ligament injury

He underwent surgery in early April, and I'm glad to say the operation was a complete success. Whilst the weeks after the surgery were somewhat stressful trying to keep an anxious Bertie as calm as possible, it was all worthwhile.

Bertie is back to his normal self - still a little anxious but a loving and adorable dog, that loves his walks and cuddles.

Petplan were absolutely marvellous and it just shows how important it is to have good insurance with every dog.

Regards,  
Nick



## FUND-RAISING AUCTIONS

Our September auction is kicking-off on the **16<sup>th</sup> September.**

Lots of this month's items would make perfect Christmas presents, so if you're looking to grab a bargain and get a head-start, please head over to our LRRSE Fundraising group on FaceBook.

A big thank-you to those that have donated items to help us raise money for our lovely dogs.

<https://m.facebook.com/groups/392487404917165/?ref=share>



# BEAR



Dear Sue,

We picked up our wonderful boy, Bear, four years ago today, from you. He is an absolute bundle of joy and we all absolutely adore him. I thought you might like to see some photos.

Louise



Please don't forget to carefully return our tag once you have your own made.

Our stock frequently runs low, and they are quite expensive for us to replace.



Thank you!





# BARNEY (formerly Bruno)



Hi Sue,

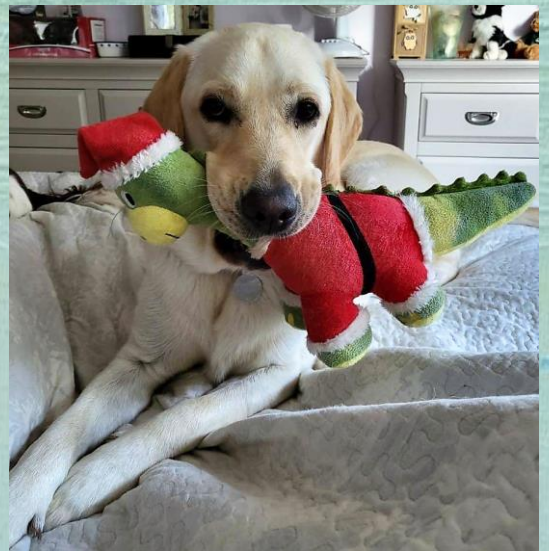
Hope you are well. Here are a few new photos.

They are not the best, as they move quick!!

In one of the photos, you can see Barney has a muddy leg - he has a habit of finding the muddiest puddle & laying in it!

Thank goodness we have streams for him to paddle in.

Have a good BH weekend, all the best from us all





# BONNIE



Update on Bonnie...Settled down very well, been to the toilet and eating well. Last night at bedtime she did not want to come upstairs. She laid down at the bottom of the stairs and slept all night, with no crying at all. Thank you for finding her for us - she is a delight. This is her forever home.

Regards Beryl & Norman

Crime is getting more and more organized 🤔🤖



The donations we received from Pets at home buy food – treats – bedding – toys etc for our rescue dogs. Please join their VIP club and make sure you choose Labrador Retriever Rescue Southern England as your chosen charity...details on how to do this are below...this won't cost you anything and will really help another rescued dog.

*Pets at Home*

By joining their VIP club and choosing us as your chosen charity, every time you make a purchase in their store a donation is made to us. Over the past months we have been able to purchase dog food, bedding, treats and toys for the dogs in kennels and in foster with the vouchers we are sent from this brilliant scheme. So, please sign up today and help us, help more beautiful dogs.

use the VIP club app for all things Lifelines

Do you have our app? Download today! It's the easiest way to get the most out of the VIP club, including:

- Quick access to your VIP club card

VIP exclusive





# DORA



Ladies, hello and thank you for the wonderful newsletters - always have me sobbing!

You may remember Dora (previously Emma) who we were lucky enough to bring home, almost exactly five years ago (6 September)! I have sent updates a couple of times and am happy to report that Dora continues to do well and is such a joy. She remains inherently nervous of anybody, due to her ghastly start in life, but becomes more and more confident as the years go by. She will now take treats from almost anybody, once she has sized them up! She behaves wonderfully well on walks and will do as many miles as we can possibly manage. She loves our Brown Lab Amy who came to us just before lockdown, so they were both at home with our full attention - and remain so, as we are lucky enough to be retired people.

So, good news from our end. We do hope, and believe, that Dora is leading a proper doggie life now, and of course she is so very much loved. Thank you for letting us bring her home to live with us. Our experience of her rehabilitation has been, and continues to be, humbling and hugely rewarding.

Thank you to you all.

All good wishes,  
Melissa



# VIOLET



*A lovely photo of Violet, who was re-homed a few months ago. She is showing off her new svelte figure, following a rigorous diet and exercise regime!  
Well done, Violet & Humum Diane!*



## STAR BOARDING KENNELS

The facilities and staff are excellent, and the immediate care and compassion given to the dogs we have placed with them has been wonderful.

If you are looking for holiday care for your dog or cat, then we thoroughly recommend the STAR BOARDING KENNELS

Wide View, Green Lane, Chessington,  
Surrey, KT9 2DS. Tel: 020 3124 1622

Email: [info@starboardingkennels.co.uk](mailto:info@starboardingkennels.co.uk)

Visit their website:

[www.star-boarding-kennels.co.uk](http://www.star-boarding-kennels.co.uk)





# FREDDIE (was ASH)

Hi Sue,

All going well with Ash, who we are now calling Freddie. He has been playing ball, had another walk yesterday and came with us to an animal sanctuary where he made friends with the dogs there.

I just changed his name on the chip. Thank you for doing the organising as well.

He did bark last night but we just reassured him.

We took him to be weighed at our vets. He weighs 50.4kg, which was a bit shocking! So will now buy weight management food and I bought a slow feeder.

He likes carrots and will try to get 15kg, over the next few weeks, off him.

He is extremely cuddly and very calm meeting people. He does think he's a Yorkshire terror and enjoys sitting on your lap.

He does try to take our food, so we think he was used to snacks but that won't happen here. He is already learning!

Thank you again, and I will definitely keep in touch with piccies.

Pam & Chris



**LILlico ATTLEE**  
**COUNTRY STORES**  
PET - EQUESTRIAN - FARM

## Attlee's Country Store Dorking



01306 884289 or 01306 883533



Parsonage Mill, Station Road, Dorking, Surrey, RH4 1EL



Monday to Saturday 8:30 - 5:00pm

Sunday 10:00am - 4:00pm



This is a lovely store with exceptionally nice staff and well worth a visit...with your dog of course!



# REMI



Hi Louise,

Remi has settled well. She is wonderful in the house and her lead training is coming on well. She is very intelligent and learning very quickly.

She really is a lovely dog.

Best wishes, Nick



Update:

Remi has settled really well. Took her to our local café today. Brilliantly well behaved.



# DEVON



Hi Sue,

Lovely to meet you yesterday.

Devon has been a sweetie! He settled in on the sofa very nicely and has been keenly collecting the balls from the garden.

My husband took him on a long countryside walk this morning and he had a dip in the river which he loved.

He is definitely a humper! That will hopefully diminish when he is neutered. I will keep you updated and will send more photos.

Best wishes,  
Rebecca



## DON'T FORCE ME TO BE SOCIAL !

### DO YOU LIKE EVERYONE YOU MEET ? NO ?.... NEITHER DOES YOUR DOG

#### JUST LIKE US, DOGS HAVE DIFFERENT LEVELS OF SOCIABILITY & TOLERANCE

#### SOCIAL

Generally likes all other dogs, even ones that may be annoying, irritating or rude

Usually a puppy, young dog or a very social adult

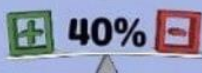


#### TOLERANT

Gets along with most other dog

Will tolerate rude behaviour

Generally calm, relaxed & confident

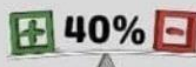


#### SELECTIVE

Only likes certain dogs

Cautious of strange dogs

Intolerant to certain play styles or some breed types



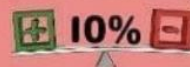
#### REACTIVE

Just not into other dogs

Prefers to be alone

May be highly sensitive

Needs supervision, management, space, understanding



Dogs are individuals - Do what you can to improve their sociability, but accept who they are, respect their choices - never forcing them to be social



# BRUNO (formerly SHADOW)

He's lovely. Even in the back of the car, he will sit when asked and give up his toy when asked. I've been sufficiently licked and sniffed xx

Shadow, looks pleased to be home!

We have been home for about two hours. He was a dream in the car but is pretty strong on the lead. However, we had ordered a halter that goes over his snout and attaches to his body halter, and it has resolved his pulling! It's absolutely amazing. X

Shadow was a very good boy. He slept at the bottom of our bed and moved to a cooler spot through the night. He slept all night and only got up when I did at 6am. Straight out for a walk, wee and a poo. Again, zero pulling on the lead. X

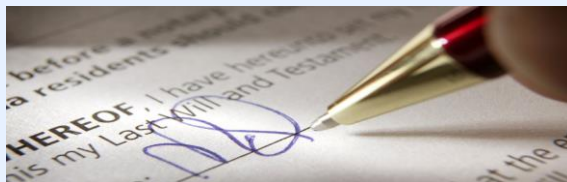


## Interesting Dog Facts

- All dogs dream, but puppies and senior dogs dream more frequently than adult dogs.
- Yawning is contagious — even for dogs. Research shows that the sound of a human yawn can trigger one from your dog. And it's four times as likely to happen when it's the yawn of a person your pet knows.
- Dogs have three eyelids.







# Please Remember Us In Your Will

Charity No 1105955

Including us in your Will is an incredible way of remembering the dogs that have given you so much love and pleasure during your life and continuing to help many other dogs in the future.

We will also care for your dog/s should the need ever arise and writing your wishes into your Will, will ensure that your pet/s continue to be loved and cherished for the rest of their lives.

LRRSE does not have any paid workers, so every penny we receive is spent on saving another dog.

We are only able to carry on our work by receiving donations and legacies. Please remember LRRSE in your Will.

## Made Your Will Yet?

### You have probably worked all your life for everything you own

**Without a Will** government rules decide who inherits it all

*The impact of Care Fees, Tax and other issues could also reduce your loved one's inheritance*

**With the "Right" Will and good planning you CAN help ensure as much as possible goes to your chosen loved ones...not to 'unintended' others**

I am pleased to offer  
**A FREE Basic Will** \*limited time introductory offer  
to the readers of this newsletter

### Specialists in Wills Trusts LPAs Probate

\*\* We donate 10% of charged Will and LPA fees to the LRRSE Charity

For an appointment  
Personalised advice  
Or more information

Call **07538 739 117**

[barry.halliday@secureinheritance.co.uk](mailto:barry.halliday@secureinheritance.co.uk)



**Barry Halliday**  
LLB (Hons) Aff SWW



**Secure Inheritance**  
**Legal Services**

Wills Trusts and Lifetime Planning  
Helping Protect Your Family's Inheritance



## Hey...What About Me?



*"I would really miss you... but what do you want to happen to me?"*

**With the "Right" Will you can name who you want to "inherit" your pets.**

Plus, if you wish, you can also leave a financial provision in your Will for your pet together with your requests about their care.



**Just contact Barry Halliday and tell him what you want for your beloved pets.**